



ExtreMetal Group

BUILD TO LAST

Contact Us



1300 169 808



www.extrememetalgroup.com.au



Sales@extrememetalgroup.com.au



70 sheahan Road, Truganina Vic-3029

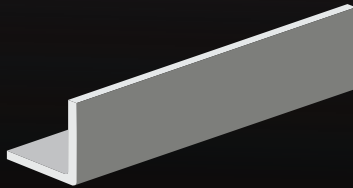


ExtreMetal Group
BUILD TO LAST

Lintel

We Build To Last

Angle

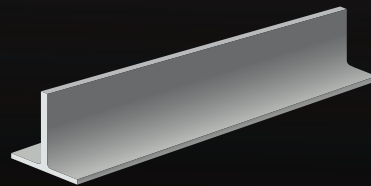


100x100x6

100x100x8

150x100x10

T-LINTEL



200x10-200x10

250x12-200x10

Lintel in Hot dip Galvanised (Australian standard)

Specialised in Residential and commercial buildings

www.extrememetalgroup.com.au



ExtreMetal Group
BUILD TO LAST

Concrete Mesh

Size: 6 m × 2.4 m

Typical Uses

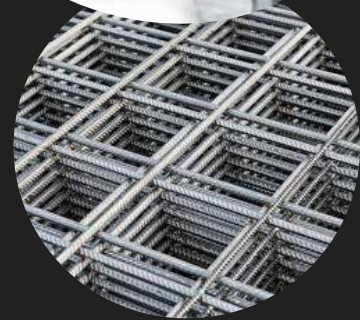
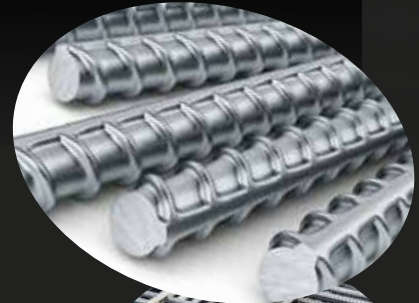
- Reinforced concrete projects
- Concrete slabs for driveways
- Ground slabs
- Suspended slabs
- Walls

Features

- Minimum yield strength of 500 MPa
- Third party accredited by ACRS

Relevant Standards

- AS/NZS 4671: Steel reinforcing materials



Specialised in Residential and commercial buildings

www.extrememetalgroup.com.au

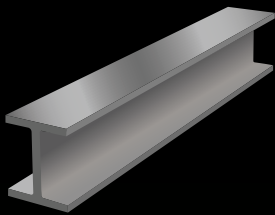


ExtreMetal Group

BUILD TO LAST

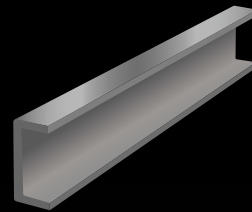
Residential Retaining Wall

75mm Sleeper H Channel UC



- 100mm X 100mm 14.8 kgs
 - 6.2mm Thickness
 - 900mm 1200mm 1500mm
1800mm 2400mm 3000mm
- Hot Dip Galvanised 85um

75mm Sleeper C Channel PFC



- 100mm X 50mm 8.33 kgs
 - 6.2mm Thickness
 - 900mm 1200mm 1500mm
1800mm 2400mm 3000mm
- Hot Dip Galvanised 85um

Commercial Retaining Wall

150mm H Channel

- 150mm X 150mm
 - 8+ mm Thickness
- Hot Dip Galvanised 85um
(Custom lengths available on request for Commercial Project)

150mm C Channel

- 150mm X 75mm
 - 8+ mm Thickness
- Hot Dip Galvanised 85um
(Custom lengths available on request for Commercial Project)

50mm Sleeper H and C channel available in 3mm Thickness

Lengths available: 600mm, 900mm, 1200mm 90 degree's corners available on request